

Cast Iron Pillow and Flange Blocks

- Cast iron housings and an insert bearing with locking grub screws
- Triple-lip seal
- The spherical nature of the insert bearing compensates for angle and alignment errors
- Long-lasting protection from highly contaminated abrasive and corrosive materials!!

UCP Pillow Block Units

Pillow blocks (UCP) are designed to provide shaft support where mounting surface is parallel to the shaft axis and the adjustment during mounting is made through the slotted holes.

UCF 4-Bolt Flanged Units

Flange blocks (UCF) have a 4-bolt mounting system and they are typically used when the shaft passes through the machine at a right angle.

In the event you need to relubricate the UCP and UCF blocks, always consult the specific relubrication cycles recommended in the operating manual of your equipment manufacturer.



Other Agricultural Bearings

- Pressed Steel Housing Flangettes
- Single and Double Row Taper Roller Bearings
- Needle Roller Bearings
- Clutch Release Bearings



PFI cost-effective, highly reliable, field-tested, long-life span, enhanced performance agricultural solutions support farmers and their productivity challenges by reducing downtime and maintenance costs, while maximizing output.



PFI Bearings

Gets you moving



www.pfibearings.com/eCatalogue

Argentina / Australia / Bolivia / Brazil / Chile / China / Colombia
Europe / Mexico / Panama / Turkey / USA

*Trusted agricultural solutions.
Field tested. Farmer approved.*



PFI Bearings

Agricultural Bearings



Special Ball Bearings - Agri Series

- Single and double row
- With round, square or hexagonal bore
- Relubricatable or non-relubricatable
- With spherical or cylindrical outer ring
- With inner ring extended on one or both sides

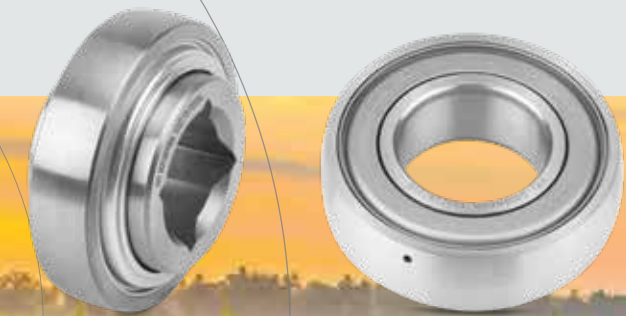


Main applications: disc harrows, seeders, mowers and combines

Highly effective seal design provides robust protection against the loss of lubricant and the ingress of wet or abrasive contaminants.

Prelubricated (non-relubricatable) versions: no cost for labor, greasing equipment and bearing replacement; no danger of using the wrong grease or over lubricating. Time and money savings! Prevention from early bearing failure!

Relubricatable versions: a better fit for environments with extreme moisture prevalence



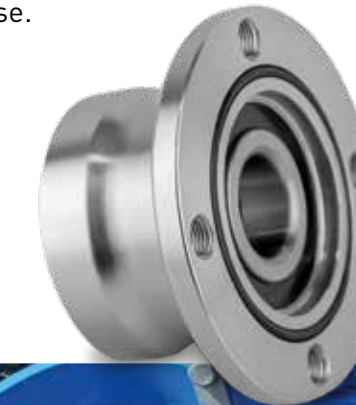
Agri-hubs Tough soil tillage? Put up a fight with the PFI Agri-Hubs!

PFI high-performance, long-life bearing solution for disc harrows.

- Maintenance-free
- Greased and sealed for life
- Superior sealing grants maximum protection against dirt, dust, humidity
- Easy to assemble and dismount
- Optimized internal bearing design
- Elevated load capacity
- High stiffness minimizes disc tilt
- Impact resistant
- Increased productivity and operating life on the field



The configuration of our agri-hub includes a double row angular contact ball bearing with a forged steel integrated flange and an advanced sealing system (mudblock seal), that can stand the use of mud while it prevents any ingress of foreign matter, including moisture and water that could get into the unit even if the machine is pressure-washed after use.



Radial Insert Ball Bearings (Wide Inner Ring Ball Bearings)

- Internal design is the same as a single row ball bearing
- Inner ring extended (on one side or both) to provide additional shaft support
- Locked to the shaft by set screws or by an eccentric locking collar
- Cylindrical or spherical outer rings
- Relubricatable (identified with the G prefix) and non-relubricatable configurations



The vast majority of our radial insert bearings are provided with triple-lip seals, an advanced sealing system that withstands the toughest environments of coarse dirt, dust, moisture, abrasion. At the same time it does an excellent job locking the lubricant in.

Some of the most common applications: seeding machines, tillage machines, combine harvesters, forage harvesters, bale chambers etc.



PFI part number	I.D. mm (J)	O.D. mm (A)	W1 mm	H mm	Flange bolts	Thread (mm)	Cross reference	
PHA0003	30,00	117,00	60,00		4	M12x1,25	SKF	BAA-0003
PHA0004	30,00	117,00	102,00	28	4	M12x1,25	SKF	BAA-0004
PHA0005	30,00	117,00	102,00	28	4	M12x1,25	SKF	BAA-0005
PHA0006	30,00	117,00	102,00	28	6	M12x1,25	SKF	BAA-0006
PHA0012	30,00	117,00	102,00	28	5	M12x1,25	SKF	BAA-0012
PHA0025	31,00	41,00	120,00		4	M8x1,25	SKF	BAA-0025

To be released soon!

